

INDUSTRIAL CRANES
NUCLEAR CRANES
PORT CRANES
HEAVY-DUTY LIFT TRUCKS
SERVICE
MACHINE TOOL SERVICE

WORKSTATION LIFTING SYSTEMS

KONECRANES®
Lifting Businesses™

WORKSTATION LIFTING SYSTEMS

THE RIGHT LIFT FOR EVERY STATION





ERGONOMY AND SAFETY THROUGH INNOVATION

Konecranes is known globally for its technologically advanced lifting solutions for various industries and different environments. Our workstation lifting systems represent the wide scope of our expertise, from hand-held lifting tools to robust hoists with 20 tons of capacity.

Workstation equipment has to be flexible in use and adaptable to changing production requirements and operating environments. Konecranes designs customizable lifting solutions that meet even the most demanding workstation needs.

All of our workstation lifting systems are designed with safety as paramount. The innovative design and ergonomic features help to ensure that the

operators can rely on their equipment and go home unharmed at the end of the shift. We also manufacture most of our products with suitability for hazardous environments.

The reliability of our lifting systems is supported by Konecranes' global service organization, the largest in the industry. We have broad experience in our customers' processes, and we are committed to constantly learning more to help you raise your productivity even higher.

Konecranes workstation lifting systems support smooth, safe and efficient lifting for all kinds of loads.



The figures are based on estimates of
The International Labor Organization, 2010.

Workplace accidents are a major financial burden for employers and a serious health risk for employees. We have designed all our lifting equipment with safety and ergonomics foremost in mind to make our contribution to preventing work-related accidents and diseases.

RELIABLE LIFTING THROUGHOUT YOUR WHOLE PROCESS



1. CLX and SLX Electric Chain Hoists



2. XA Aluminium Workstation Crane



3. ATB AirBalancer



4. XM Workstation Crane





5. Jib Crane



6. Manual products



7. Service



Extremely versatile and durable
CLX and SLX hoists are ideal
for demanding workstation use.
Compact headroom, hook suspension
and various other features provide
necessary flexibility.



CLX Electric Chain Hoist

UP TO 5,000 KG OF LASTING LIFTING POWER

- 50% ED rating (up to FEM 3m) with 300 starts per hour
- Temperature monitoring and fan ventilation as standard
- Hoisting ambient temperature between -20 °C and +40 °C (-4 °F and +104 °F) as standard
- Less stress on the chain with new, patented chain drive
- Brake and slipping clutch prevent the load from dropping or micro-slipping
- Robust upper and lower limit switches are integrated into hoist body

EASY SERVICEABILITY AND SIMPLE MAINTENANCE ACCESS MINIMIZES DOWNTIME

- Easy replacement of components with plug-in connections
- Improved safety with hoist limit switch, securing brake, and hook block
- Maintenance-free gearbox
- No special tools required for servicing the hoist
- Self-adjusting magnetic brake designed for the lifetime of the hoist
- IP55 protection against dust and water



Chain drive sprocket



POQ pendant



reddot design award
product design 2013

The CLX hoist series won the prestigious Red Dot Award for product design in 2013. An international design award created by Design Zentrum Nordrhein-Westfalen in Germany, it is one of the most sought after quality marks for excellent design.



Electric Chain Hoists are available as EX products.

SLX Electric Chain Hoist

A PERFECT CHOICE FOR DEMANDING USE

- All the CLX features and more
- Stepless hoisting speeds with inverter
- Shorter cycles with ESR
- Excellent for precise assembly work and sensitive parts handling

EFFICIENCY AND SAFETY WITH ADVANCED TECHNOLOGY

- Electronic overload device and slack chain control
- Programmable limit switches
- Faster hoisting and lowering of partial loads with XSR
- Shock Load Absorption for reducing the effects of shock loads
- Clutch and brake supervision through pulse sensors for better safety

CLX AND SLX KEY OPTIONS

- Voltages 208 to 575 in 50 and 60 Hz
- Self-locking hook
- Stainless steel hook and hook block
- Manual brake release
- Low headroom trolley
- Swiveling trolley
- Ambient temperature up to +50 °C (122 °F)

CLX AND SLX

	02 CLX	05 CLX & SLX	10 CLX & SLX	16 CLX	25 CLX
Min. speed ¹ (m/min)	2	1.3/0.32	0.7/0.16	0.7	0.7
Max. speed ² (m/min)	20	20	20	16	20
ESR ³ (m/min)		32	32		
C-dimension ⁴ (mm)	373/-	420/-	544/647	567/693	611/761

Rated Capacity
(kg)

320

630

2500

3200

5000



¹ CLX/SLX ² CLX with 50hz ³ ESR = Extended speed range for SLX ⁴ 1-fall / 2-fall with hook suspension (8 m/m)

Konecranes ATB AirBalancer utilize pneumatic power for efficient, silent, and clean lifting operations. Combined with the XA Crane, they are environmentally friendly solutions to improve workstation efficiency.



XA Aluminium Workstation Crane

EXTREMELY LIGHT, EXTREMELY DURABLE

- Profiles with bolt connections enable easy extensions
- Load capacity up to 2,000 kg
- Anodized aluminium surface is optimal for clean environments
- Lighter than steel by approximately 50%
- Smooth running on high-quality joint connections

SAFE AND ERGONOMIC OPERATIONS

- High structural stiffness minimizes dead weights
- Light weight and low rolling resistance
- Short installation time, minimal maintenance required
- Lifetime protection against corrosion
- Easy recycling

KEY OPTIONS

- Motorized trolley for bridge and/or trolley with integrated frequency control
- Different system configurations:
 - manual and motorized motion
 - optimized headroom solutions
 - articulated or rigid connection
- Variety of suspensions and energy supply
- Free-standing structure
- Different profile sizes

PROFILE SIZES



AL06



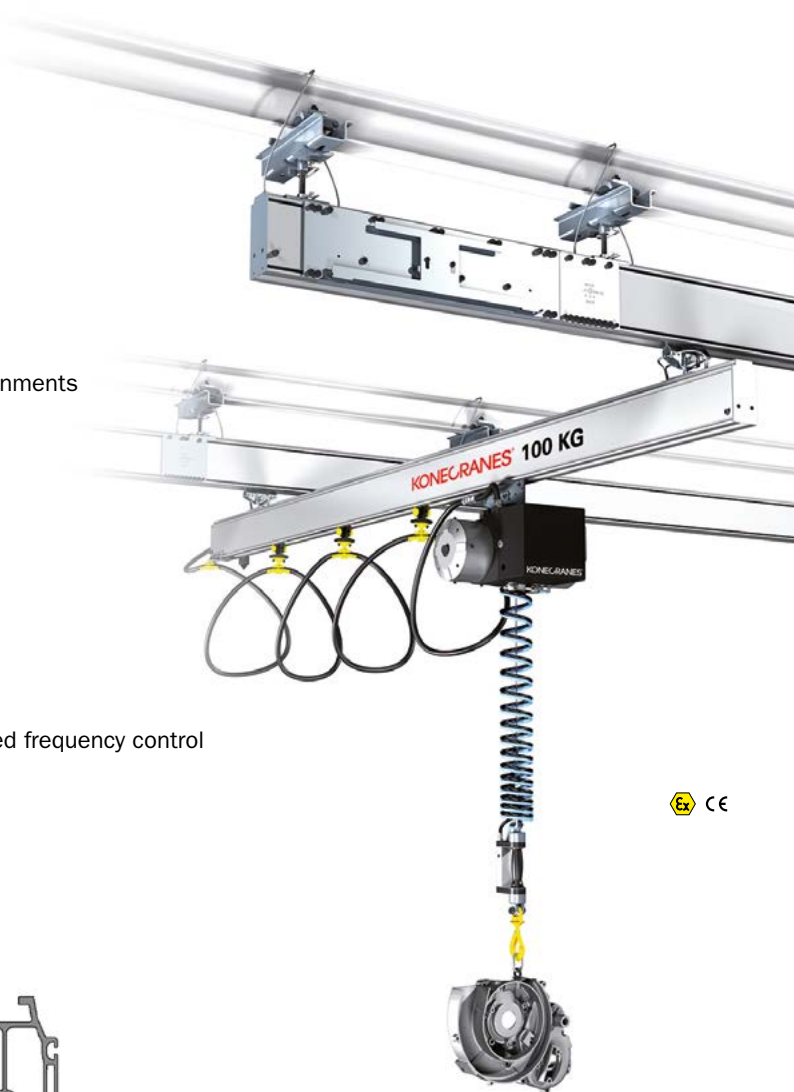
AL08



AL10



AL14





The XA Aluminium Workstation Crane and ATB AirBalancer are also available as EX products.



ATB AirBalancer

IMPROVED PRODUCTIVITY WITH SHORTER CYCLE TIMES

- Load capacity up to 350 kg, load weight compensation as standard
- Adjustable speeds up to 1.5 m/s, shorter cycle times
- Ergonomic 3-dimensional load movement without buttons or handles
- Extremely heavy-duty with 100% duty cycle
- Highly configurable to perfectly match the needed application

YOUR LOADS WILL FEEL ALMOST WEIGHTLESS

- Great tool for assembling, packing, and manoeuvring items by hand
- Increased safety with centrifugal brake and wear-free overload protection
- Clean and quiet working environment due to power source
- Precise handling with a great variety of control systems and optional features

KEY OPTIONS

- Baseload function to keep the air pressure at a safe level
- Load limiter function
- Proportional pushbutton control for precise positioning of varying loads
- Proportional inline-handle for button-less positioning of varying loads
- Balancing control for predefined weights
- Balancing control with automatic load detection for varying weights
- Interlock function to prevent the release of the lifted load



ATB	ATB 70-2000B	ATB 120-2000B	ATB 120-3000B	ATB 160-2000B	ATB 225-1800B	ATB 350-1200B	ATB 350-2000B
Stroke (mm)	2000	2000	3000	2000	1800	1200	2000
Weight (kg)	30	36	47	45	47	45	53
SWL (kg) at 7 bar / 102 psi*)	70	120	120	160	225	350	350

* Max lifting capacity with 7 bar (102 psi) input pressure at the balancer piston, recommended work load max 75% of capacity.

Our Jib Cranes and XM Workstation Cranes are durable solutions for various light material lifting needs. XM Cranes also offer extra flexibility and adaptability to suit specific tasks and facilities.



XM Workstation Crane

FOR HEAVY-DUTY OPERATIONS

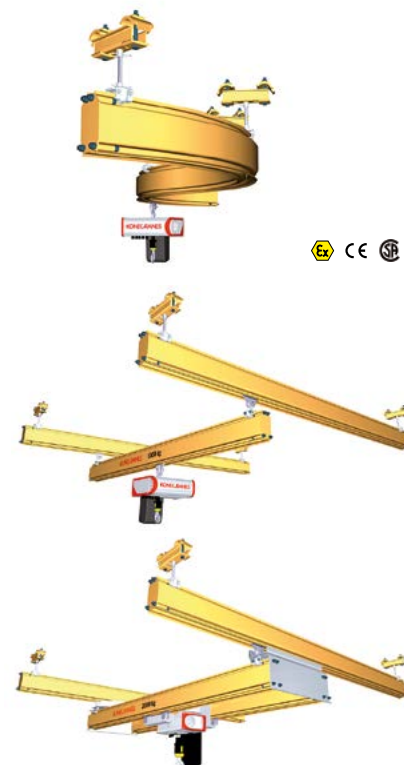
- Weld-free modular system is easy to install, modify, and extend
- Long suspension distances minimize steel structures and reduce overall costs
- Load capacity up to 2,000 kg
- Easy pre-wired electrics

STRONG, DURABLE, MADE OF STEEL

- Increased productivity due to optimized working area below crane
- High-quality finish and unique hollow profile ensures smooth traveling
- Longer lifetime and reduced maintenance costs with dust and dirt protection
- Machined wheels and high-quality bearings allow silent running

KEY OPTIONS

- Different profile sizes
- Different system configurations:
 - Manual and motorized motion
 - Optimized headroom solutions
 - Articulated or rigid connection
- Service hatch
- Industry-specific safety features
- Telescopic arm
- Variety of suspensions and power feeding lines
- Free-standing structure
- Monorails with electrical and manual switches and turntables



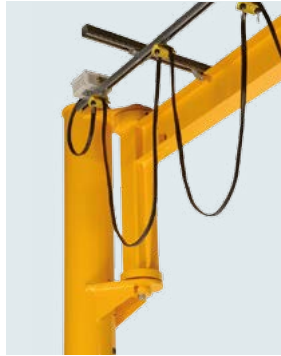
PROFILE SIZES



UKA20

UKA30

UKA40



The XM Workstation Crane and Jib Crane are also available as EX products.



Jib Crane

ADJUSTABLE TO YOUR FACILITY

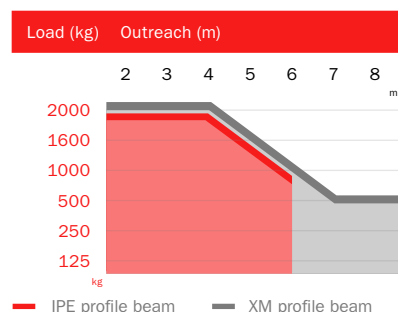
- Standard load capacity up to 2,000 kg
- Slews 270 degrees pillar-mounted and 180 wall-mounted
- Easy installation and relocation reduces downtime

EXCELLENCE IN SAFETY

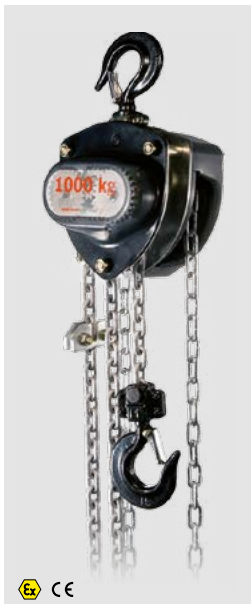
- Uncontrolled trolley and beam movements are minimized by the adjustable console bearing
- Main switch as a standard feature to optimize safety
- Several options for improved safety and usability:
 - Adjustable rotation stop with 10° increments
 - 3-position lock (-90°, 0°, +90°)
 - Different anchoring possibilities

KEY FEATURES

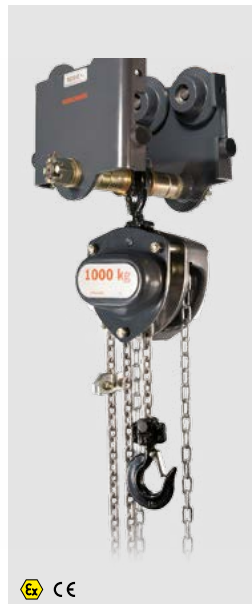
- XM profile beam
 - High efficiency due to low weight, unique shape, and low friction wheels
 - Light construction reduces stress on structures
 - Excellent hook outreach dimension
 - Power-feeding flat cable under the profile
- IPE profile beam
 - Durable and robust solution combined with a festoon system on a galvanized c-track
 - Allows for very low headroom



When working in an environment where electricity is not available or impractical to use, Konecranes manual products are ready to do the lifting. They are an economical solution with wide load ranges and various features to enhance your work ergonomics.



KM2 Hand Chain Block



KMP Hand Chain Block



Manual products

DURABLE MANUAL HOISTS PACKED WITH FEATURES

- European, galvanized grade 80 alloy steel load chain
- Stainless steel chains and hook and chain collector as options
- Rugged construction featuring a steel gear case and hand wheel cover
- Totally enclosed brake provides protection against dirt
- Dual pawl Weston-style brake with two friction discs, 4 braking surfaces

KM2 Hand Chain Block

- Smooth and efficient operations with machined chain sprocket and gears
- Rugged construction featuring a steel gear case and hand wheel cover

KMP Hand Chain Block

- Torque limiter as overload device
- One extra bearing to support the load wheel

KL Lever Puller

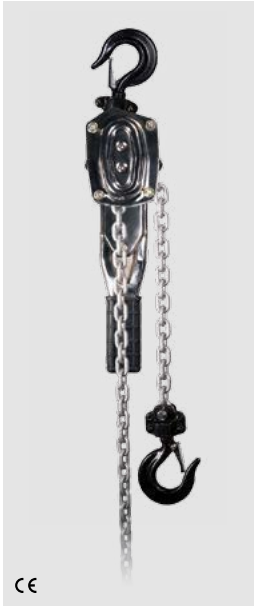
- Ideal for e.g. construction, maintenance, and service
- 360° handle rotation and rubber grip
- Lifting mechanism can be released when unloaded

KLP Lever Puller Heavy Duty

- Compact and lightweight design
- 360° handle rotation and 15° handle recovery
- Open chain path for simple inspection and cleaning
- Smooth free-wheel feature for easy chain adjustment
- Machined chain sprocket ensures efficient operation
- High strength, grade 100 alloy steel load chain
- Available only in US



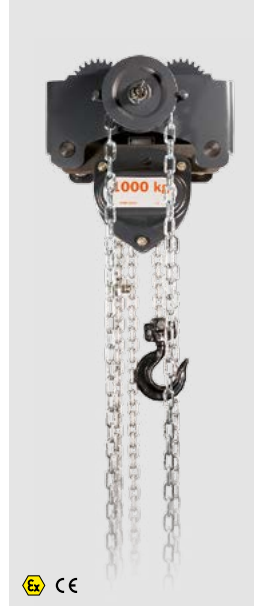
KL Lever Puller



KLP Lever Puller Heavy Duty



KPT & KPTC Manual Trolleys



Low Headroom Trolley



VERSATILE MANUAL TROLLEYS FOR DEMANDING USE

- Trolley plates in high resistance steel
- Designed for both manual and electrical hoists
- Wider flanges available

KPT & KPTC Manual Trolleys

- Easily adjustable for a wide range of flange widths up to 310 mm
- Safety drop lugs and rubber bumpers included
- Wheel ball bearings are sealed and maintenance-free

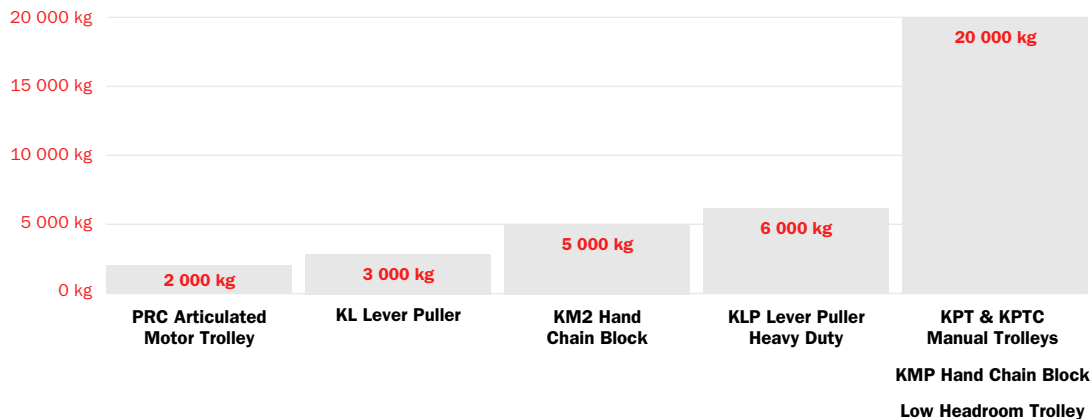
Low Headroom Trolley

- Galvanized hand chain-driven trolley
- Adjustable according to beam width up to 305 mm
- Optimized headroom
- Push trolleys available as options

PRC ARTICULATED MOTOR TROLLEY

- Span of up to 12 meters
- Designed for electrically powered articulated sliding girders

LOAD CAPACITIES





SERVICE TAILORED TO YOUR NEEDS

IMPROVING YOUR SAFETY AND PERFORMANCE

All of our service solutions aim to give you the optimal package of services to help increase the productivity of your business in various ways. We help to minimize the total cost of ownership while increasing productivity, reliability, and operator safety.

THE INDUSTRY'S LEADING SERVICE NETWORK

A commitment to excellent, proactive, and real-time service is one of Konecranes' strategic priorities. With over 600 service locations in almost 50 countries, we have the largest service network in the industry and provide high-quality service 24/7. Konecranes continuously evolves its service offering by adding research and development on top of over 60 years of maintenance expertise.

GLOBAL PRESENCE WITH LOCAL SUPPORT

We make it happen locally and globally with our skilled people, backed by equipment manufacturer competence and world-class tools. Konecranes services over 30,000 companies throughout the world, with over 430,000 items of equipment in our maintenance contract base.



- Main production sites
- Sales and service locations
- Distribution centers

This publication is for general informational purposes only. Konecranes reserves the right at any time, without notice, to alter or discontinue the products and/or specifications referenced herein. This publication creates no warranty on the part of Konecranes, express or implied, including but not limited to any implied warranty or merchantability or fitness for a particular purpose.



INDUSTRIAL
CRANES



NUCLEAR
CRANES



PORT
CRANES



HEAVY-DUTY
LIFT TRUCKS




SERVICE



MACHINE
TOOL
SERVICE



Konecranes is a world-leading group of Lifting Businesses™, serving a broad range of customers, including manufacturing and process industries, shipyards, ports and terminals. Konecranes provides productivity-enhancing lifting solutions as well as services for lifting equipment and machine tools of all makes. In 2015, Group sales totaled EUR 2,126 million. The Group has 11,900 employees at 600 locations in 48 countries. Konecranes is listed on the Nasdaq Helsinki (symbol: KCR1V).

© 2016 Konecranes. All rights reserved. 'Konecranes', 'Lifting Businesses' and  are either registered trademarks or trademarks of Konecranes.

